

# TECHBUD.AI

## The Powerful Enterprise-wide Generative AI Platform

Unleash Rapid Innovation to Drive Sustained  
and Profitable Business Outcomes



## Overview

Every industry is adopting Generative AI capabilities to augment innovation, automation, efficiency, data segmentation, simulation, and personalization capabilities. Enterprises achieve a more extraordinary ability to deliver personalized, efficient, and engaging customer experiences, leading to increased satisfaction, loyalty, and business growth.

With IGT Solutions' Generative AI platform, TechBud.AI, you can unleash rapid innovation, drive business outcomes, and enhance customer experience.

The platform enables you to achieve cost efficiency by harnessing the power of Generative AI in a flexible, responsible, secure, and scalable manner.



## Key Features of TechBud.AI



AI-powered  
Recommendation Engine



Data Analytics  
and Insights



Ready-to-use  
AI models



API Integration  
for Seamless Adoption



Cloud-Based  
Infrastructure for  
Scalability



User-friendly  
Interface and Intuitive  
Workflow



Customization and  
Adaptability to Unique  
Business Needs



Robust Security  
and Data Privacy  
Measures

# Ready Offerings

## **Innovation Hub Centre**

Established industry-focused innovation hubs in Delhi and Pune

## **Expertise and Guidance**

A dedicated and highly skilled team of over 100 specialists in GPT technology, prompt engineers, Generative AI testers, and GPT integration SMEs

## **Partnership and Collaboration**

Powered by OpenAI GPT 4 model, in partnership with Microsoft along with others in the Gen AI space

## **Trust and Reliability**

Built in the Azure Cloud Services to enable powerful applications and APIs

## **Functional CoPilots**

Extensive CoPilots that cater to the business needs of every industry

## **Enterprise CoPilots**

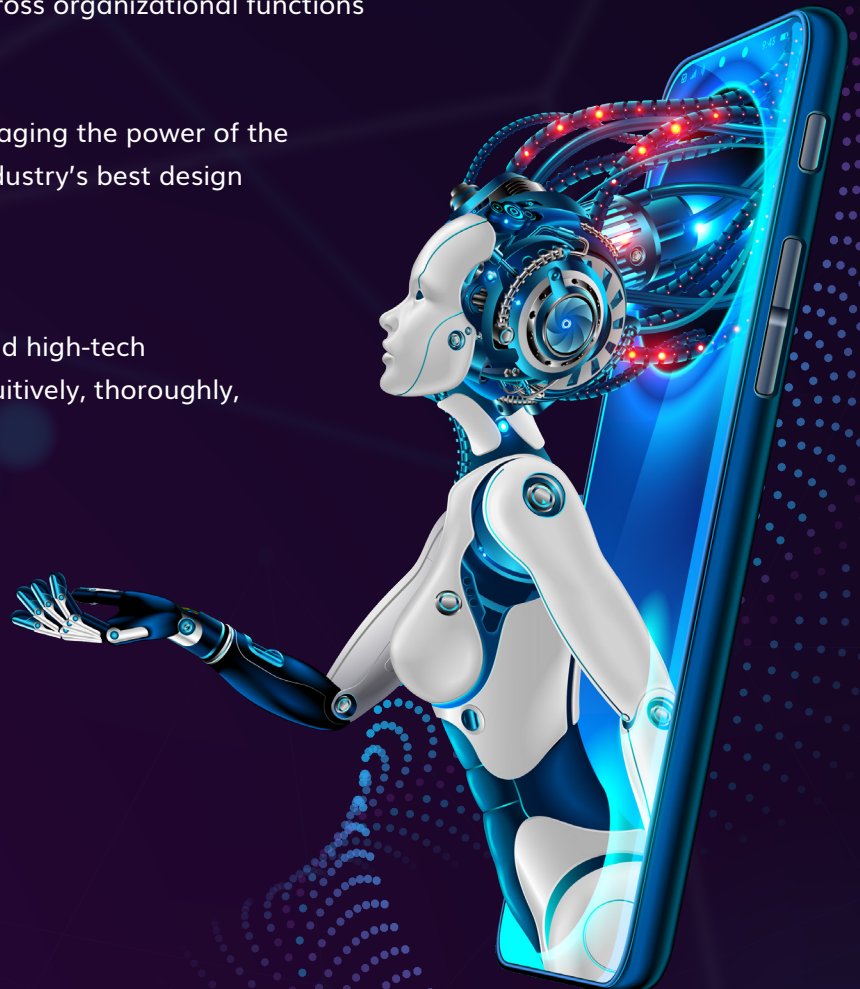
Custom-built and ready-to-use CoPilots across organizational functions

## **Scalability and Flexibility**

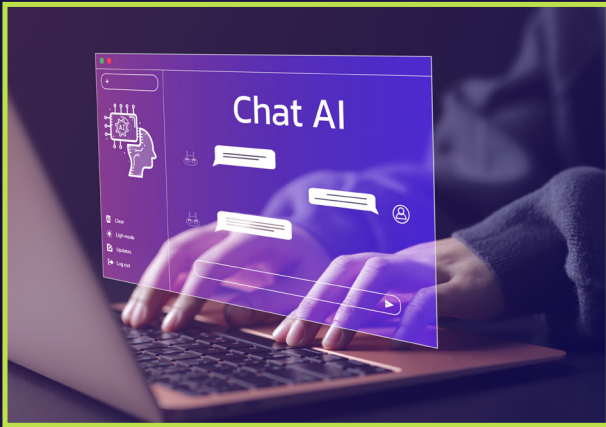
Addresses the business requirements leveraging the power of the Cloud, its native features aligned to the industry's best design principles

## **Identified Use Cases**

Extensive set of use cases to help travel and high-tech companies respond to customer needs intuitively, thoroughly, and efficiently



# What makes it unique?



## SMARTER

- 15+ Industry Prebuilt Intelligent CoPilots
- LLM AI Model Library
- 10+ Enterprise Prebuilt CoPilots

## FASTER

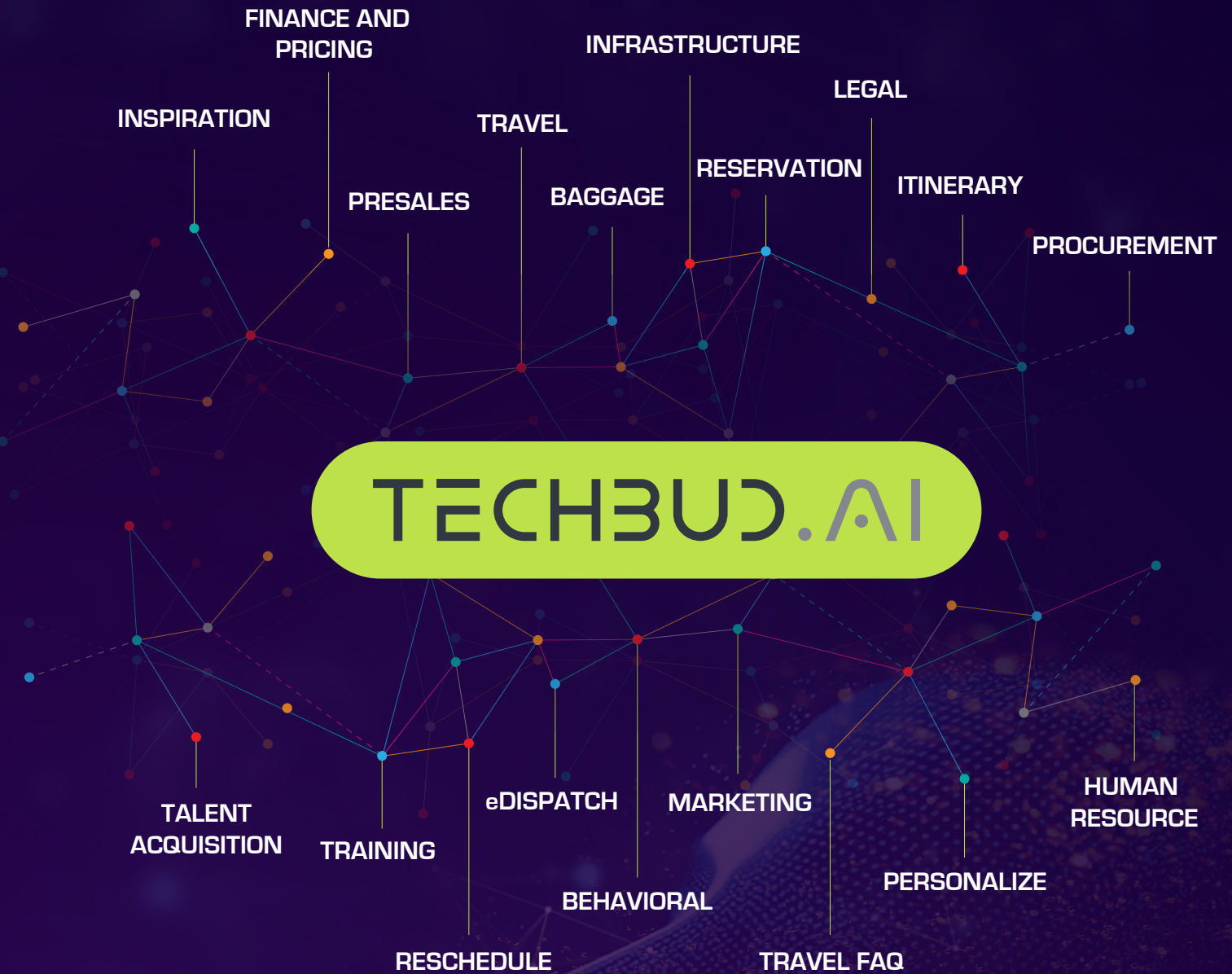
- 50-60% Jumpstart for Development
- More than 30% Optimized Regression Cycle
- 20-25% Faster Go-To-Market



## SECURE

- Cloud Native
- PII, PCI-DSS, and GDPR Compliant
- Certified API interfaces Industry certified CoPilots


# Select Functional and Enterprise CoPilots




## About IGT Solutions

IGT Solutions is a next-gen customer experience (CX) company, defining and delivering AI-led transformative experiences for the global and most innovative brands using digital technologies. With the combination of Digital and Human Intelligence, IGT becomes the preferred partner for managing end-to-end CX journeys across Travel and High Growth Tech industries.

Established in 1998, with a 100% focus on customer experience, IGT employs more than **25,000 customer experience** and technology specialists providing services to **85 marquee customers** globally. IGT's global footprint consists of **30 delivery centers** in China, Colombia, Egypt, India, Indonesia, Malaysia, Philippines, Romania, South Africa, Spain, UAE, the US, and Vietnam.

 [mktg@igtsolutions.com](mailto:mktg@igtsolutions.com)

 [www.igtsolutions.com](http://www.igtsolutions.com)